



CEN LINK

FIBER OPTIC CONNECTIVITY

OPTICAL TRANSCEIVER SUPPLIER

NEW BROCHURE



CEN LINK OPEN OPTICAL NETWORK PRODUCT GUIDE

AI | Data center | 5G | Metro Telecom | HD Video

Open Optical Network Devices Explorer

01 Pluggable Optical Transceivers

02 CPO (Co - Packaged Optics)

03 AOC (Active Optical Cable)

04 DAC (Copper Cable)

05 Immersion Liquid Cooling Transceivers

06 SDI Optical Transmission Solution

07 Coherent/Non-Coherent DWDM Solution

CEN Pluggable Optical Transceivers

01

800G Optical Transceiver



Product	LD	Reach	Optical Interface	Max. Power	P/N	Use
800G OSFP VR8	850nm VCSEL	30m (OM3) /50m (OM4)	MPO16/2×MPO12	13.5W	COS-MPO801-VR8C	DC
800G OSFP SR8	850nm VCSEL	60m (OM3) /100m (OM4)	MPO16/2×MPO12	13.5W	COS-MPO801-SR8C	DC
800G OSFP DR8/DR8+	1310nm CW+MZ	500m/2km	Dual MPO12	16W	COS-SI801DR8CA COS-SI801xR8C	DC
800G OSFP DR8++	1310nm CW+MZ	10km	Dual MPO12	16W	COS-SI801LDR8C	DC
800G OSFP DR8 LPO+	1310nm CW+MZ	500m	2x MPO12/APC	8.5W	TBD	DC
800G OSFP 2×FR4	CWDM4 CW+MZ	2km	Dual Duplex LC	16W	COS-SI8012FR4C	DC
800G OSFP 2×LR4	CWDM4 CW+MZ	10km	Dual Duplex LC	16W	COS-SI8012LR4C	DC
800G OSFP FR8	LAN-WDM EML	2km	Dual LC	16W	COS-SPO801-FR8C	DC
800G QSFP-DD VR8	850nm VCSEL	30m (OM3) /50m (OM4)	MPO16/2×MPO12	13.5W	CQD-MPO801-VR8C	DC
800G QSFP-DD SR8	850nm VCSEL	60m (OM3) /100m (OM4)	MPO16/2×MPO12	13.5W	CQD-MPO801-SR8C	DC/5G
800G QSFP-DD DR8/DR8+	1310nm CW+MZ	500m/2km	MPO16	16W	CQD-SI801DR8C CQD-SI801XDR8C	DC
800G QSFP-DD DR8++	1310nm CW+MZ	10km	MPO16	16W	CQD-SI801LDR8C	DC
800G QSFP-DD 2xFR4	CWDM4 CW+MZ	2km	Dual Duplex LC	16W	CQD-SI8012FR4C	DC
800G QSFP-DD 2×LR4	CWDM4 CW+MZ	10km	Dual Duplex LC	16W	CQD-SI8012LR4C	DC
800G QSFP-DD FR8	LAN-WDM EML	2km	Dual LC	16W	CQD-SPO801-FR8C	DC/5G
800G OSFP XPSM8/8ER	1310 CW + PIN/APD	10km/30km	2X MPO12/APC	TBD	TBD	DC

400G Optical Transceiver



Product	LD	Reach	Optical Interface	Max. Power	P/N	Use
400G QSFP-DD SR8	850nm VCSEL	70m (OM3) /100m (OM4)	MPO16	8.5W	CQD-MPO401-SR8CD	DC/5G
400G QSFP-DD PSM8	1310nm EML	2km/10km	MPO16	11W	CDM-SPO401-FR8C CDM-SPO401-LR8C	DC/5G
400G QSFP-DD PSM8	1310 CW+MZ	2km/10km	MPO16	11W	CDM-SPO401-FR8/LR8C	DC
400G QSFP-DD 2×FR4	CWDM4 DML	2km	Dual Duplex LC	9W	CQD-SPO401-FR4CZ	DC
400G QSFP-DD FR8	LWDM8 EML	2km	Dual LC	12.5W	CQD-SPO401-FR8C	DC/5G
400G QSFP-DD LR8	LWDM8 EML	10km	Dual LC	12.5W	CQD-SPO401-LR8C	DC/5G
400G QSFP-DD VR4	850nm VCSEL	30m (OM3) /50m (OM4)	MPO12	8W	CQD-MPO401-VR4C	DC
400G QSFP-DD SR4	850nm VCSEL	60m (OM3) /100m (OM4)	MPO12	8W	CQD-MPO401-SR4C	DC/5G
400G QSFP-DD DR4/DR4+	1310nm CW+MZ	500m/2km	MPO12	10W	CQD-SI401XDR4C CQD-SI401DR4C	DC
400G QSFP-DD DR4++	1310nm CW+MZ	10km	MPO12	10W	CQD-SI401LDR4C	DC
400G QSFP 112 DR4 LPO+	1310nm CW+MZ	500m	MPO12	4.5W	TBD	DC
400G QSFP-DD FR4	CWDM4 EML	2km	Dual LC	11W	CQD-SPO401-FR4X	DC
400G QSFP-DD LR4	CWDM4 EML	10km	Dual LC	11W	CQD-SPO401-LR4X	DC/5G
400G QSFP-DD ER4-30	nLAN-WDM EML	30km	Dual LC	11W	COP-SPO401-ER4C	DC
400G QSFP112 VR4	850nm VCSEL	30m (OM3) /50m (OM4)	MPO12	8W	CQS-MPO401-VR4C	DC
400G QSFP112 SR4	850nm VCSEL	60m (OM3) /100m (OM4)	MPO12	8W	CQS-MPO401-SR4C	DC/5G
400G QSFP112 DR4/DR4+	1310nm CW+MZ	500m/2km	MPO12	10W	CQS-SI401DR4C CQS-SI401xR4C	DC
400G QSFP112 DR4++	1310nm CW+MZ	10km	MPO12	10W	CQS-SI401xR4C	DC
400G QSFP112 FR4	CWDM4 EML	2km	Dual LC	11W	CQS-SPO401-FR4C	DC
400G QSFP112 LR4	CWDM4 EML	10km	Dual LC	11W	CQS-SPO401-LR4C	DC/5G
400G OSFP-RHS VR4	850nm VCSEL	30m (OM3) /50m (OM4)	MPO12	8W	COP-MPO401-VR4C	DC
400G OSFP-RHS SR4	850nm VCSEL	60m (OM3) /100m (OM4)	MPO12	8W	COP-MPO401-SR4C	DC
400G OSFP-RHS DR4/DR4+	1310nm CW+MZ	500m/2km	MPO12	10W	COP-SI401DR4C COP-SI401xR4C	DC
400G OSFP-RHS DR4++	1310nm CW+MZ	10km	MPO12	10W	COP-SI401xR4C	DC
400G OSFP-RHS FR4	CWDM4 EML	2km	Dual LC	11W	COP-SPO401-FR4C	DC
400G OSFP-RHS LR4	CWDM4 EML	10km	Dual LC	11W	COP-SPO401-LR4C	DC

200G Optical Transceiver



Product	LD	Reach	Optical Interface	Max. Power	P/N	Use
200G QSFP-DD SR8	850nm VCSEL	100m	MPO24	4W	CQD-MPO201-DSR4C	DC/5G
200G QSFP-DD 2xCWDM4	2xCWDM4 DML	2km	Dual Duplex LC	6.5W	CQD-SPO201-CIR4C	DC
200G QSFP-DD PSM8/XPSM8	1310nm DML	2km/10km/20km	MPO24/MPO16	6W/6.5W	CDM-SPO201-FR8C CDM-SPO201-FR8T CDM-SPO201-LR8C	DC/5G
200G QSFP-DD LR8	LWDM DML	10km/20km	Dual LC	7.5W	CQD-SPO201-LR8C	DC/5G
200G QSFP-DD SR4	850nm VCSEL	100m	MPO12	5W	CQS-SPO201-SR4C	DC/5G
200G QSFP-DD PSM4	1310nm EML	2km	MPO12	5.5W	CDM-SPO201-FR4C	DC/5G
200G QSFP-DD FR4	CWDM EML	2km	Dual LC	9W	CQD-SPO201-FR4C	DC/5G
200G QSFP-DD LR4	LWDM4 EML	10km	Dual LC	9W	CQD-SPO201-LR4C	DC/5G
200G QSFP-DD ER4	LWDM4 EML	40km	Dual LC	9W	CQD-SPO201-ER4C	DC/5G
200G QSFP56 SR4	850nm VCSEL	70m (OM3) /100m (OM4/OM5)	MPO12	5W	CQS-MPO201-SR4C	DC
200G QSFP56 DR4	1310nm DML	500m	MPO12	5.5W	CQS-SPO20-DR4CZA	DC
200G QSFP56 FR4	CWDM4 DML	2km	Dual LC	6W	CQS-SPO201-FR4CW	DC
200G QSFP56 LR4	LWDM4 DML	10km/20km	Dual LC	7.5W	CQS-SPO201-LR4CZ	DC
200G QSFP56 SR2	850nm VCSEL	100m	MPO12	5W	CQS-MPO201-SR2C	DC

100G Optical Transceiver



Product	LD	Reach	Optical Interface	Max. Power	P/N	Use
100G QSFP28 SR4	850nm VCSEL	70m(OM3) 100m(OM4)	MPO12	2W	CQS-MPO101-SR4C CQS-MPO101-SR4T	DC/5G
100G QSFP28 eSR4	850nm VCSEL	70m(OM3) 100m/300m(OM4)	MPO12	2W	CQS-MPO101-eSR4C CQS-MPO101-eSR4T	DC/5G
100G QSFP28 PSM4	1310nm DML	2km	MPO12	3.5W	CQM-SPO101-IR4C	DC/5G
100G QSFP28 SWDM4	SWDM VCSEL	70m(OM3)/100m(OM4)/ 150m(OM5)		3.5W	CQS-MPO101-SM4C	DC
100G QSFP28 xPSM4	1310nm DML	10km	MPO12	3.5W	CQM-SPO101-LR4C CQM-SPO101-LR4T	DC
100G QSFP28 CWDM4	CWDM4 DML	2km/10km	Dual LC	3.5W	CQS-SPO101-CIR4C CQS-SPO101-CLR4C CQS-SPO101-CLR4T	DC/5G
100G QSFP28 CLR4	CWDM4 DML	2km/10km	Dual LC	3.5W	CQS-SPO101-CCR4CB CQS-SPO101-CMR4C	DC
100G QSFP28 LR4	LWDM4 DML	10km/20km	Dual LC	3.5W	CQS-SPO101-LR4C CQS-SPO101-LR4T CQS-SPO101-L24C	DC/5G
100G QSFP28 LR4(Dual Rates)	LWDM4 DML	10km/20km	Dual LC	3.5W	CQS-SPO111-LR4C CQS-SPO111-L24C	DC
100G QSFP28 ER4 Lite	LWDM4 DML	40km	Dual LC	3.8W	CQS-SPO101-ES4C	DC/5G
100G QSFP28 ER4	LWDM4 EML	40km	Dual LC	6W	CQS-SPO101-ER4C CQS-SPO111-ER4C	DC/5G
100G QSFP28 ZR4	LWDM4 EML	80km	Dual LC	6W	CQS-SPO101-ZR4C	DC/5G
100G QSFP28 SR1.2	850/900nm BiDi VCSEL	100m(OM4) 150m(OM5)	Dual LC	3W	CQS-MPO101-SRBDC	DC
100G QSFP28 SR1	850nm VCSEL	70m(OM3) 100m/300m(OM4)	MPO12	2W	CQS-SPO101-SR1C	DC
100G QSFP28 DR1	1310nm DML 1310nm CW+MZ	500m	Dual LC	4W	CQS-SPO101-DR1C CQS-SI101DR1C	DC
100G QSFP28 FR1	1310nm EML 1310nm CW+MZ	2km	Dual LC	4W	CQS-SPO101-FR1C CQS-SI101FR1C	DC
100G QSFP28 LR1	1310nm EML 1310nm CW+MZ	10km/20km	Dual LC	4W	CQS-SPO101-LR1C CQS-SI101LR1C	DC/5G
100G QSFP28 ER1-30	1310nm EML	30km	Dual LC	4W	CQS-SPO101-ER1C	DC/5G
100G QSFP28 BiDi LR1	1271/1331nm EML	10km	Single LC	3.5W	CBQ-2733101-LR1C CBQ-3327101-LR1C	DC/5G
100G QSFP28 BiDi XLR1	1295/1309 1291/1311nm	20km	Single LC	3.5W	CBQ-2930101-L21C CBQ-2931101-L21C	DC/5G
100G QSFP28 BiDi ER1-30	1304/1309nm EML	30km	Dual LC	3.5W	CBQ-3030101-L31C	DC/5G
100G QSFP28 BiDi ZR4	LAN WDM EML	80km	Single LC	6W	CBQ-U101-ZR4 CBQ-D101-ZR4	DC/5G
100G QSFP28 CWDM LR1	CWDM EML	10km	Dual LC	3.5W	CQS-Cxx101-LR1C	DC/5G
100G QSFP28 SR4 Rugged	850nm VCSEL	70m(OM3)100m(OM4)	MPO12	2W	CQF-MPO101-SR4C	DC
100G QSFP28 PSM4 Rugged	1310nm EML	2km	MPO12	3.5W	CMF-SPO101-LR4C	DC
100G QSFP28 CWDM4 Rugged	CWDM4 DML	2km	Dual LC	3.5W	CQF-SPO101-CLR4C	DC
100G SFP56-DD SR2	850nm VCSEL	100m	MPO12	3W	TBD	DC
100G SFP56-DD FR1	1310nm EML	2km	Dual LC	3.5W	CSD-SPO111-FR1C	DC
100G SFP56-DD LR1/XLR1	1310nm EML	10km/20km	Dual LC	3.5W	CSD-SPO111-LR1C	DC/5G
100G SFP56-DD ER1-30	1310nm EML	30km	Dual LC	3.5W	CSD-SPO111-ER1C	DC/5G
100G SFP112 FR1	1310nm EML	2km	Dual LC	3.5W	CSS-SPO101-FR1C	DC/5G
100G SFP112 LR1/XLR1	1310nm EML	10km/20km	Dual LC	3.5W	CSS-SPO101-LR1C	DC/5G
100G SFP112 ER1-30	1310nm EML	30km	Dual LC	3.5W	CSS-SPO101-ER1C	DC/5G

HAOC (5G)

Product	Data Rate	Reach	Max. power consumption	P/N
10G SFP+ HAOC	10.3125Gbps	300m	0.8W	GSS-MDO100-xxxT
25G SFP28 HAOC	25.78125Gbps	70m/100m	1W	GSS-MDO250-xxxT
100G QSFP28 HAOC	103.125Gbps	70m/100m	2W	GQS-MDO101-xxxT
100G QSFP28 to 4x 25G SFP28 HAOC	103.125Gbps	1m~100m	2W/4W	GQP-MDO101-xxxT

AOC (Data Center)

Product	Data Rate	Reach	Max. power consumption	P/N
800G QSFP-DD AOC	850Gbps	30m (OM3) or 50m (OM4)	14W	CCQ-MDO121-xxxC
800G OSFP AOC	850Gbps	30m (OM3) or 50m (OM4)	14W	CQS-MDO111-xxxC
800G QSFP-DD to 2x400G QSFP112 Breakout AOC	850Gbps	30m (OM3) or 50m (OM4)	14W(800G)/8W(400G)	CQS-MDO111-exxxC
800G OSFP to 2x400G OSFP112 Breakout AOC	850Gbps	30m (OM3) or 50m (OM4)	14W(800G)/8W(400G)	CQD-MDO201-xxxC
400G QSFP56-DD AOC	425Gbps	70m (OM3) or 100m (OM4/OM5)	9W	CQD-MDO401-xxxC
400G QSFP56-DD to 2x 200G QSFP56 AOC	425Gbps	70m (OM3) or 100m (OM4/OM5)	9W(400G)/5W(200G)	CDA2-MDO401-xxxC
400G QSFP56-DD to 4x 100G QSFP56 AOC	425Gbps	70m (OM3) or 100m (OM4/OM5)	9W(400G)/4.5W(100G)	CDA4-MDO401-XXXC
400G QSFP56-DD to 8x 50G SFP56 AOC	425Gbps	70m (OM3) or 100m (OM4/OM5)	9W(400G)/2W(50G)	CDS8-MDO401-xxxC
400G QSFP112 AOC	425Gbps	60m (OM3) or 100m (OM4)	8W	CQS-MDO401-XXXC
400G OSFP-RHS AOC	425Gbps	60m (OM3) or 100m (OM4)	8W	COP-MDO401-XXXC
400G OSFP-RHS to 2x200G QSFP56 AOC	425Gbps	60m (OM3) or 100m (OM4)	8W(400G)/4.2W(200G)	COS-GDA2MDO401-xxxC
200G QSFP28-DD AOC	206.25Gbps	70m (OM3) or 100m (OM4)	4W	CQD-MDO201-xxxC
200G QSFP28-DD to 2x 100G QSFP28 AOC	206.25Gbps	70m (OM3) or 100m (OM4)	4W(200G)/2W(100G)	CDA2-MDO201-xxxC
200G QSFP28-DD to 4x 50G QSFP28 AOC	206.25Gbps	70m (OM3) or 100m (OM4)	4W(200G)/1.5W(50G)	CDA4-MDO201-xxxC
200G QSFP56 AOC Lite	212.5Gbps	35m (OM3)	4.5W	CQS-MDO201-xxxCW
200G QSFP56 AOC	206.25Gbps	70m (OM3) or 100m (OM4/OM5)	5W	CQS-MDO201-xxxC
200G QSFP56 to 2x 100G QSFP56 AOC	206.25Gbps	70m (OM3) or 100m (OM4/OM5)	5W(200G)/4.5W(100G)	CQQ2-MDO201-xxxC
200G QSFP56 to 4x 50G QSFP56 AOC	206.25Gbps	70m (OM3) or 100m (OM4/OM5)	5W(200G)/4.5W(50G)	CQQ4-MDO201-xxxC
200G QSFP56 to 4x 50G SFP56 AOC	206.25Gbps	70m (OM3) or 100m (OM4/OM5)	5W(200G)/2W(50G)	CQP-MDO201-xxxC
128GFC QSFP28 AOC	112.2Gbps	70m (OM3) or 100m (OM4)	2W	CQS-MDO111-xxxC
128GFC QSFP28 AOC (Enhanced)	112.2Gbps	200m (OM3) or 300m (OM4)	2W	CQS-MDO111-exxxC
120G CXP AOC	103.125Gbps	300m (OM3) or 400m (OM4)	4.5W	CCX-MDO121-xxxC
120G CXP to 3x 40G QSFP+ AOC	103.125Gbps	100m (OM3)	4.5W(120G)/1.5W(40G)	CCQ-MDO121-xxxC
100G QSFP28 AOC	103.125Gbps	70m (OM3) or 100m (OM4)	2W	CQS-MDO101-xxxC
100G QSFP28 AOC (Enhanced)	103.125Gbps	200m (OM3) or 300m (OM4)	2W	CQS-MDO101-exxxC
100G QSFP28 to 2x 50G QSFP28 AOC	112.2Gbps	70m (OM3) or 100m (OM4)	2W(100G)/1.5W(50G)	CQS2-MDO101-xxxC
100G QSFP28 to 4x 25G SFP28 AOC	103.125Gbps	70m (OM3) or 100m (OM4)	2W(100G)/1W(25G)	CQP-MDO101-xxxC
56G QSFP+ AOC	56.25Gbps	100m (OM3) or 150m (OM4)	1.5W	CQS-MDO560-xxxC
56G QSFP28 AOC	56.1Gbps	70m (OM3) or 100m (OM4)	1.5W	CQQ-MDO560-xxxC
50G SFP56 AOC	53.125Gbps	70m (OM3) or 100m (OM4/OM5)	2W	CSS-MDO280-exxxC
40G QSFP+ AOC	41.25Gbps	300m (OM3) or 400m (OM4)	1.5W	CQS-MDO400-xxxC
40G QSFP+ to 4x 10G SFP+ AOC	41.25Gbps	100m (OM3)	1.5W(40G)/1W(10G)	CQP-MDO400-xxxC
32GFC SFP28 AOC	28.05Gbps	70m (OM3) or 100m (OM4)	1W	CSS-MDO280-xxxC
32GFC SFP28 AOC (Enhanced)	28.05Gbps	200m (OM3) or 300m (OM4)	1W	CSS-MDO280-exxxC
25G SFP28 AOC	25.78125Gbps	70m (OM3) or 100m (OM4)	1W	CSS-MDO250-xxxC
10G SFP+ AOC	10.3125Gbps	300m (OM3)	1W	CSS-MDO100-xxxC

PCC/ACC



Product	Data Rate	Port 1	Port 2	Reach	P/N
800G PCC/ACC					
800G QSFP112-DD PCC	850Gbps	QSFP112-DD	QSFP112-DD	1m (30AWG) /2m (26AWG)	CQS-PC801-xxC
800G QSFP-DD to 2×400G QSFP112 Breakout PCC	850Gbps/2×425Gbps	QSFP-DD	QSFP112	1m (30AWG) /1.8m (26AWG)	CQD-2QPC801-xxC
800G OSFP PCC	850Gbps	OSFP	OSFP	0.5m/1m (30AWG) 2m (26/25AWG)	COS-PC801-XXXX
800G OSFP to 2×400G OSFP-RHS Breakout PCC	850Gbps/2×425Gbps	OSFP	OSFP-RHS	1m (30AWG) 1.8m (26AWG)	COS-2OPC801-xxC
800G OSFP to 2×400G QSFP112 Breakout PCC	850Gbps/2×425Gbps	OSFP	QSFP112	1.5m (30AWG) 3m (26AWG)	COS-2Q112P801-xxC
800G OSFP to 4×200G QSFP112 Breakout PCC	850Gbps/4×212.5Gbps	OSFP	QSFP112	1.5m (30AWG) 3m (26AWG)	COS-4Q112P801-xxC
800G QSFP-DD ACC	850Gbps	QSFP-DD	QSFP-DD	4m (26AWG)	CQD-AC801-DXXC
800G QSFP-DD to 2×400G QSFP112 Breakout ACC	850Gbps/2×425Gbps	QSFP-DD	QSFP112	5m (26AWG)	CQD-2QAC801-xxC
800G OSFP ACC	850Gbps	OSFP	OSFP	5m (26AWG)	COS-AC801-XXXX
800G OSFP to 2×400G OSFP-RHS Breakout ACC	850Gbps/2×425Gbps	OSFP	OSFP-RHS	5m (26AWG)	COS-2OAC801-xxC
800G OSFP to 4×200G OSFP-RHS Breakout ACC	850Gbps/4×212.5Gbps	OSFP	OSFP-RHS (Flat-top)	4m (30AWG) /5m (26AWG)	COS-4OA801-xxC
800G OSFP to 2×400G QSFP112 Breakout ACC	850Gbps/2×425Gbps	OSFP	QSFP112	4m (30AWG) /5m (26AWG)	COS-2Q112A801-xxC
800G OSFP to 4×200G QSFP112 Breakout ACC	850Gbps/4×212.5Gbps	OSFP	QSFP112	4m (30AWG) /5m (26AWG)	COS-4Q112A801-xxC
400G PCC/ACC					
400G QSFP56-DD PCC	425Gbps	QSFP56-DD	QSFP56-DD	2m (30AWG) /3m (26AWG)	CQD-PC401-xxC
400G QSFP56-DD to 2x 200G QSFP56 PCC	425Gbps/2×212.5Gbps	QSFP56-DD	QSFP56	2m (30AWG) /3m (26AWG)	CQD-2Q56P401-xxC
400G QSFP56-DD to 4x 100G QSFP56 PCC	425Gbps/4×103.125Gbps	QSFP56-DD	QSFP56	2m (30AWG) /3m (26AWG)	CQD-4Q56P401-xxC
400G QSFP56-DD to 8x 50G SFP56 PCC	425Gbps/8×53.125Gbps	QSFP56-DD	SFP56	2m (30AWG) /3m (26AWG)	CQD-8S56P401-XXC
400G QSFP112 PCC	425Gbps	QSFP112	OSFP112	1m (30AWG) /2m (26AWG)	CQS-PC401-xxC
400G OSFP-RHS PCC	425Gbps	OSFP-RHS	OSFP-RHS	1m (30AWG) /2m (26AWG)	COS-PC401-xxC
400G OSFP-RHS to 2x 200G QSFP56 PCC	425Gbps/2×212.5Gbps	OSFP-RHS	OSFP56	1.5m (30AWG) 2m (26AWG)	COS-2Q56P401-xxC
400G OSFP-RHS to 2x 200G QSFP28 PCC	425Gbps/2×212.5Gbps	OSFP-RHS	QSFP28	1.5m (30AWG) 2m (26AWG)	COS-2Q28P401-xxC
400G OSFP-RHS to 4x 100G QSFP28 PCC	425Gbps/4×103.125Gbps	OSFP-RHS	QSFP28	1.5m (30AWG) 2m (26AWG)	COS-4Q28P401-xxC
400G QSFP-DD ACC	425Gbps	OSFP-DD	OSFP-DD	7m (26AWG)	CQD-AC401-DXXC
400G QSFP112 ACC	425Gbps	QSFP112	QSFP112	2~5m (26/25AWG)	CQS-AC401-xxC
400G OSFP-RHS ACC	425Gbps	OSFP-RHS	OSFP-RHS	3~4m(30/26AWG) 4~7m(26AWG)	COS-AC401-XXC
200G PCC/ACC					
200G QSFP-DD PCC	206.25Gbps	QSFP28-DD	QSFP28-DD	3m (30AWG) /5m (26AWG)	CQD-PC201-xxC
200G QSFP56 PCC	212.5Gbps	QSFP56	QSFP56	2m (30AWG) /3m (26AWG)	CQS-PC201-XXC
200G QSFP56 to 2x 100G QSFP56 PCC	212.5Gbps	QSFP56	QSFP56	3m (30AWG) /2m (26AWG)	CQS-2Q56-PXXC
200G QSFP56 to 4x 50G SFP56 PCC	212.5Gbps/4×53.125Gbps	QSFP56	SFP56	2m (30AWG) /3m (26AWG)	CQS-4Q56-PXXC
200G QSFP56 ACC	212.5Gbps	QSFP56	QSFP28	7m (26AWG)	CQS-AC201-DXXC
200G/100G/56G/40G/25G/10G PCC					
100G QSFP28 PCC	103.125Gbps	QSFP28	QSFP28	3m (30AWG) /5m (26AWG)	CQS-PC101-xxC
100G QSFP28 to 4x 25G SFP28 PCC	103.125Gbps/4×25.78125Gbps	QSFP28	SFP28	3m (30AWG) /5m (26AWG)	CQS-4P28-PxxC
100G SFP112 PCC	103.125Gbps	SFP112	SFP112	1.8m (26AWG)	CSS-PC101-xxC
100G SFP112 ACC	103.125Gbps	SFP112	SFP112	5m (26AWG)	CSS-AC101-xxC
56G QSFP+ PCC	56.25Gbps	QSFP+	QSFP+	2m (30AWG) 3m (28AWG) /5m (26AWG)	CQS-PC560-xxxxC
50G SFP56 PCC	53.125Gbps	SFP56	SFP56	2m (30AWG) /3m (26AWG)	CSS-PC560-xxC
40G QSFP+ PCC	41.25Gbps	QSFP+	QSFP+	3m (30AWG) /5m (26AWG)	CQS-PC400-xxC
40G QSFP+ to 4x 10G SFP+ PCC	41.25Gbps/4×10.3125Gbps	QSFP+	SFP+	3m (30AWG)	CQS-PC400-xxC
25G SFP28 PCC	25.78125Gbps	SFP28	SFP28	2m (30AWG) /5m (26AWG)	CPP-PC250-xxxxC
10G SFP+ PCC	10.3125Gbps	SFP+	SFP+	3m (30AWG) /7m (24AWG)	CPP-PC192-xxxxC

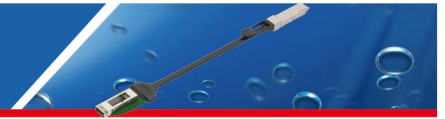
Note: The "xxx" in the model indicates the length, such as 001=1m, 002=2m, 010=10m, 100=100m, and so on.

Immersion Liquid Cooling Optical Transceiver



Product	Network protocol specification	LD	PD	Reach	Port	Max. power consumption	P/N
10G SFP+ SR	10GBASE-SR	850nm VCSEL	PIN	300m(OM3)/400m(OM4)	LC Pigtail/FC Pigtail	0.8W	CL-S100-SR-L/F
10G SFP+ LR	10GBASE-LR	1310nm DML	PIN	10km	LC Pigtail/FC Pigtail	0.8W	CL-S100-LR-L/F
25G SFP28 SR	25GBASE-SR	850nm VCSEL	PIN	70m(OM3)/100m(OM4)	LC Pigtail/FC Pigtail	1W	CL-S250-SR-L/F
25G SFP28 LR	25GBASE-LR	1310nm DML	PIN	10km(SMF)	LC Pigtail/FC Pigtail	1.5W	CL-S250-LR-L/F
40G QSFP+ SR4	40GBASE-SR4	850nm VCSEL	PIN	70m(OM3)/100m(OM4)	MPO12 Pigtail	1.5W	CL-Q400-SR4-M
100G QSFP28 DR1	100GBASE-DR1	1310nm EML	PIN	500m	LC Pigtail/FC pigtail	4W	CL-Q101DR1-LXXX
100G QSFP28 SR4	100GBASE-SR4 EDR	850nm VCSEL	PIN	70m(OM3)/100m(OM4)	MPO12 Pigtail	2W	CL-Q101-SR4-M
100G QSFP28 PSM4	100G-PSM4 EDR	1310nm DML	PIN	2km	MPO12 Pigtail	4.5W	CL-P101-IR4-M
200G QSFP56 SR4	100GBASE-SR4 200GBASE-SR4	850nm VCSEL	PIN	70m(OM3)/100m(OM4)	MPO12 Pigtail	5W	CL-Q201-SR4-M
400G OSFP-RHS SR4	400GBASE-SR4	850nm VCSEL	PIN	100m	MPO12 Pigtail	8W	CL-O401-SR4-M
400G QSFP112 SR4	400GBASE-SR4	850nm VCSEL	PIN	100m	MPO12 Pigtail	8W	CL-Q401-SR4-M
800G OSFP DR8	800GBASE-DR8	1310nm CW+ MZM	PIN	500m	2x MPO12/APC	15W	CL-O801DR8-LXXXA
800G QSFP-DD SR8	800GBASE-SR8	850nm VCSEL	PIN	100m	MPO16 Pigtail Dual MPO12 Pigtail	13.5W	CL-D801-SR8-M
800G OSFP SR8	800GBASE-SR8	850nm VCSEL	PIN	100m	MPO16 Pigtail Dual MPO12 Pigtail	13.5W	CL-O801-SR8-M

Immersion Liquid Cooling Optical Extenders



Product	Encapsulation	AWG	Reach	Temperature (°C)	P/N
25G/50G SFP56 liquid cooling extender	SFP56 to SFP56 Flat cage	30AWG	50cm	0~70	TBD
40G QSFP+ liquid cooling extender	QSFP+ to QSFP+ Flat Cage	30AWG	50cm	0~70	CLQE-PC400-DXX
100G QSFP28 liquid cooling extender	QSFP28 to QSFP28 Flat Cage	30AWG	50cm	0~70	CLQE-PC101-DXX
100G SFP112 liquid cooling extender	SFP112 to SFP112 Flat cage	30AWG	50cm	0~70	TBD
200G QSFP56 liquid cooling extender	QSFP56 to QSFP56 Flat Cage	30AWG	50cm	0~70	CLQE-PC201-DXX
200G QSFP-DD liquid cooling extender	QSFP-DD to QSFP-DD Flat Cage	30AWG	50cm	0~70	CLQD-PC201-DXX
400G QSFP-DD liquid cooling extender	QSFP-DD to QSFP-DD Flat Cage	30AWG	50cm	0~70	CLQD-PC401-DXX
400G OSFP-RHS liquid cooling extender	OSFP-RHS to OSFP-RHS Flat cage	30AWG	50cm	0~70	TBD
800G OSFP-RHS liquid cooling extender	OSFP to OSFP-RHS Flat cage	30AWG	30cm	0~70	TBD
800G OSFP to QSFP-DD liquid cooling extender	OSFP to QSFP-DD Flat cage	30AWG	30cm	0~70	TBD
800G QSFP-DD liquid cooling extender	QSFP-DD to QSFP-DD Flat Cage	30AWG	30cm	0~70	CLQD-PC801-DXX

Immersion Liquid Cooling AOC



Product	Network protocol specification	LD	PD	Reach	Max. power consumption
10G SFP+ AOC	10GBase-SR	850nm VCSEL	PIN	1-100m/400m	0.8W
25G SFP28 AOC	25GBase-SR	850nm VCSEL	PIN	1-100m	1W
40G QSFP+ AOC	40GBase-SR4	850nm VCSEL	PIN	1-300m/400m	1.5W
100G QSFP28 AOC	100GBase-SR4	850nm VCSEL	PIN	1-100m/300m	2W
100G QSFP28 to 2/4× Breakout AOC	100GBase-SR4	850nm VCSEL	PIN	1-100m/300m	2/1.5/1W
200G QSFP-DD AOC	100GBase-SR4	850nm VCSEL	PIN	1-100m	4W
200G QSFP-DD to 2/4/8× Breakout AOC	100GBase-SR4	850nm VCSEL	PIN	1-100m	4/2/1.5/1W
200G QSFP56 AOC	100G/200GBase-SR4	850nm VCSEL	PIN	1-100m	5W
200G QSFP56 to 2/4× Breakout AOC	100G/200GBase-SR4	850nm VCSEL	PIN	1-100m	5/4.5/2W
400G QSFP-DD AOC	400GBase-SR8/200GBase-SR4	850nm VCSEL	PIN	1-100m	9W
400G QSFP-DD to 2/4/8× Breakout AOC	400GBase-SR8/200GBase-SR4	850nm VCSEL	PIN	1-100m	9/5/4.5/2W
400G OSFP-RHS AOC	400GBase-SR8	850nm VCSEL	PIN	1-100m	10W
400G OSFP-RHS to 2/4/8× Breakout AOC	400GBase-SR8	850nm VCSEL	PIN	1-100m	10/5/4.5/2W
400G QSFP112 AOC	400GBase-SR4	850nm VCSEL	PIN	1-100m	10W
400G QSFP112 to 2/4/8× Breakout AOC	400GBase-SR4	850nm VCSEL	PIN	1-100m	10/5/4.5/2W
800G QSFP-DD AOC	800GBase-SR8	850nm VCSEL	PIN	1-100m	15W
800G QSFP-DD to 2/4/8× Breakout AOC	800GBase-SR8	850nm VCSEL	PIN	1-100m	15/10/5/4.5W
800G OSFP AOC	800GBase-SR8	850nm VCSEL	PIN	1-100m	15W
800G OSFP to 2/4/8× Breakout AOC	800GBase-SR8	850nm VCSEL	PIN	1-100m	15/10/5/4.5W

50G/40G/32G/25G/16G Optical Transceiver



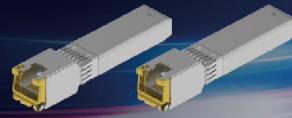
Product	TX	RX	Max. Power	Reach	Temperature	P/N	Use
50G SFP56 SR	850nm VCSEL	PIN	2W	100m	0~70/-40~+85	CSS-MPO560-SRC CSS-MPO560-SRT	DC/5G
50G SFP56 LR	1310nm EML	PIN	3W	10km	0~70/-40~+85	CSS-SPO500-LR1C CSS-SPO500-LR1T	DC/5G
50G SFP56 LR	1310nm DML	PIN	3W	10km	0~70/-40~+85	CSS-SPO500-LR1CZ	DC/5G
50G SFP56 ER	1310nm EML	APD	3W	40km	0~70/-40~+85	CSS-SPO500-ER1C CSS-SPO500-ER1T	DC/5G
50G SFP56 BR20-D	1330/1270nm EML	PIN	3W	20km	0~70/-40~+85	CBS-3327500-12C CBS-3327500-12T	DC/5G
50G SFP56 BR20-U	1270/1330nm EML	PIN	3W	20km	0~70/-40~+85	CBS-2733500-L2C CBS-2733500-L2T	DC/5G
50G SFP56 BR30-D	1310/1270nm EML	APD	3W	30km	0~70/-40~+85	CBS-3127500-L3C CBS-3127500-L3T	DC/5G
50G SFP56 BR30-U	1270/1310nm EML	APD	3W	30km	0~70/-40~+85	CBS-2731500-L3C CBS-2731500-L3T	DC/5G
50G SFP56 DWDM	C-BAND EML	PIN	3W	5km	0~70/-40~+85	CSS-Dxx500-05C CSS-Dxx500-05T	DC/5G
40G QSFP+ SR4	850nm VCSEL	PIN	1.5W	300m(OM3)/400m(OM4)	0~70/-40~+85	CQS-MPO400-SR4C CQS-MPO400-SR4T	DC/5G
40G QSFP+ PSM4	1310nm FP/DML	PIN	3.5W	2km/10km	0~70	CQM-SPO400-IR4C CQM-SPO400-LR4C	DC/5G
40G QSFP+ LR4	CWDM4 FP/DML	PIN	3.5W	2km/10km	0~70	CQS-SPO400-IR4C CQS-SPO400-LR4C	DC/5G
40G QSFP+ ER4	CWDM DML	APD	3.5W	40km	0~70	CQS-SPO400-ER4C	DC/5G
40G QSFP+ ZR4	LWDM4 EML	APD	3.5W	80km	0~70	CQS-SPO401-ZR4C	DC/5G
32G SFP28 SR	850nm VCSEL	PIN	1W	70m(OM3)/100m(OM4)	0~70/-40~+85	CSS-MPO280-SRC CSS-MPO280-SRT	DC/5G
32G SFP28 eSR	850nm VCSEL	PIN	1W	200m(OM3)/300m(OM4)	0~70/-40~+85	CSS-MPO280-eSRC CSS-MPO280-eSRT	DC/5G
32G SFP28 LR	1310nm EML	PIN	1.8W	10km	0~70/-40~+85	CSS-MPO280-LRC CSS-MPO280-LRT	DC/5G
32G SFP28 ER	1310nm EML	APD	1.8W	40km	0~70/-40~+85	CSS-MPO280-ERC CSS-MPO280-ERT	DC/5G
32G SFP28 DWDM	C18-C61 100GHz EML	PIN	1.8W	2km/10km	0~70/-40~+85	CSS-Dxx280-LRC CSS-Dxx280-LRT	DC/5G
25G SFP28 SR	850nm VCSEL	PIN	1W	102m/300m	-40~+85	CSS-MPO250-SRT CSS-MPO250-CSRT	DC/5G
25G SFP28 LR	1310nm DML	PIN	1.2W	10km/20km	-40~+85	CSS-SPO250-LRT CSS-SPO250-L2T	DC/5G
25G SFP28 ER	1310nm EML	APD	1.8W	40km	-40~+85	CSS-SPO250-ERT	DC/5G
25G SFP28 ZR	1300nm EML	SOA+PIN	2.5W	80km	0~70	CSS-SPO250-ZRC	DC/5G
25G SFP28 BR10-U	1270/1330nm DML	PIN	1.5W	10km	-40~+85	CBP-2733250-LRT	DC/5G
25G SFP28 BR10-D	1330/1270nm DML	PIN	1.5W	10km	-40~+85	CBP-3327250-LRT	DC/5G
25G SFP28 BR20-U	1270/1330nm DML	APD	1.8W	20km	-40~+85	CBP-2733250-L2T	DC/5G
25G SFP28 BR20-D	1330/1270nm DML	APD	1.8W	20km	-40~+85	CBP-3327250-L2T	DC/5G
25G SFP28 BR40-U	1270/1310nm EML 1270/1330nm EML	APD	1.9W	40km	-40~+85	CBP-2731250-ERT CBP-2733250-ERT	DC/5G
25G SFP28 BR40-D	1310/1270nm EML 1330/1270nm EML	APD	1.9W	40km	-40~+85	CBP-3127250-ERT CBP-3327250-ERT	DC/5G
25G SFP28 CWDM	1271~1371nm DML 1271~1371nm DML 1411~1591nm EML	PIN/APD/APD	1.8W	10km/10km/15km	-40~+85	CSS-Cxx250-LRT CSS-Cxx250-LRT CSS-Cxx250-LST	DC/5G
25G SFP28 LWDM	1269.23~1318.35nm DML 1269.23~1318.35nm DML 1273.55~1309.14nm EML	PIN/APD/APD	1.5W/1.8W/2W	12km/20km/40km	-40~+85	CSS-Sxx250-LRT CSS-Sxx250-L2T CSS-Sxx250-ERT	DC/5G
25G SFP28 DWDM	C-BAND EML	PIN/APD	1.8W/2W	2km/10km	-40~+85	CSS-Dxx250-02T CSS-Dxx250-LRT	DC/5G
25G SFP28 DWDM	O-BAND DML	PIN/APD	1.8W/2W	10km/40km	-40~+85	CSS-Oxx250-LRT CSS-Oxx250-ERT	DC/5G
16G SFP+ SR	850nm VCSEL	PIN	1.2W	100m(OM3)/190m(OM4)	0~70	CPP-8514G-SRC	DC/5G
16G SFP+ LR	1330nm DML	PIN	1.5W	10km	0~70	CPP-3114G-LRC	DC/5G
16GFC SFP+ ER	1310nm DML	PIN	1.5W	40km	0~70	CPP-3114G-ERC	DC/5G
16G SFP+ DWDM	C18-C61 100GHz EML	PIN/APD	1.8W	10km/40km	0~70 -40~+85	CDP-xx14G-01C CDP-xx14G-01T CDP-xx14G-04C CDP-xx14G-04T	DC/5G

1G-10G Optical Transceiver



Product	TX	Reach	RX	P/N	Use
10G XFP	850nm	400m	LC	CX-85192-SRx	DC/5G
	1310nm	2/10/20/40km		CX-31192-02C/GX-31192-LRx/GX-31192-L2C/GX-31192-ERx	
	1550nm	40/80/120km		CX-55192-ERC/GX-55192-12C/GX-55192-ZRx	
10G XFP BIDI	1270/1330nm	10/20/40/50km	Simplex LC	CBX-xxxx192-LR /GBX-xxxx192-L2C/GBX-xxxx192-ERC/GBX-xxxx192-E5C	DC/5G
	1490/1550nm	80km		CBX-xxxx192-E8C	
10G XFP CWDM	1271~1611nm(20nm)	10/40km	LC	CXC-xx192 -01x/GXC-xx192 -04x	DC/5G
	1591~1611nm(20nm)	70km		CXC-xx192 -07x	
	1471~1571nm(20nm)	80km		CXC-xx192 -08x	
10G XFP DWDM	1528.77~1563.05nm(100GHz)	40/80km	LC	CXC-xx192 -01x/GXC-xx192 -04x	DC/5G
	1528.77~1563.05nm (50GHz)	80km		CXC-xx192 -07x	
	1528.77~1560.61nm(100GHz)	120km		CXC-xx192 -08x	
10G SFP+	850nm	400m	LC	CPP -85192-SRx	DC/5G
	1310nm	220m/2/10/20/40km		CPP -31192-LRMC/GPP -31192-02C/GPP -31192-LRx/GPP -31192-L2C/GPP -31192-ERC	
	1550nm	40/60/80km		CPP -55192-ERC/GPP -55192-E6C/GPP -55192-ZRx	
10G SFP+ BIDI	1270/1330nm	10/20/40/60km	Simplex LC	CBP -xxxx192 -LRx(I)/GBP -xxxx192 -L2x(I)/GBP -xxxx192 -ERx(I)/GBP -xxxx192 -E6x(I)	DC/5G
	1490/1550nm	80km		CBP -xxxx192 -08C/GBP -xxxx192 -E8C	
10G SFP+ CWDM	1271~1611nm (20nm)	10/20/40km	LC	CCP -xx192 -01x/GCP -xx192 -02x/GCP -xx192 -04x	DC/5G
	1591~1611nm (20nm)	70km		CCP -xx192 -07x	
	1471~1571nm (20nm)	80km		CCP -xx192 -08x	
10G SFP+ DWDM	C18-C61 100GHz	40/70/80km	LC	CDP-xx192-04C/GDP-xx192-07C/GDP-18192-08C	DC/5G
	CH18-CH61 50GHz	80km		CDP-xxx192-08C	
10G SFP+ DWDM Tunable	C-band (50GHz)	80km	LC	CPU -Cxxx -08CD	DC/5G
2.5G SFP	850nm	300m/500m	LC	CP-8548-S3xD/GP-8548-S5xD	DC/5G
	1310nm	2/20/40km		CP-3148-02xD/GP-3148-L2xD/GP-3148-L4CD	
	1550nm	40/80km		CP-5548-L4xD/GP-5548-L8CD	
2.5G SFP BIDI	1310/1550nm	20km	Simplex LC	CPB-xx48x-L2xD	DC/5G
	1490/1550nm	40/80km		CPB-xx48x-L4CD/GPB-4xx48L-L8CD	
2.5G CSFP	1310/1490nm	20km	LC	CCB-3448-L2CD/GCB-4348-L2CD	DC/5G
	1310/1550nm	20km		CCB-3548-L2CD/GCB-5348-L2CD	
2.5G SFP CWDM	1271~1611nm (20nm)	40km	LC	CPC-xx48-04xD	DC/5G
	1471~1611nm (20nm)	80km		CPC-xx48-08CD	
2.5G SFP DWDM	1528.77~1563.05nm (100GHz)	80km	LC	CPD-xxMR-08CD/GPD-xx48-08CD	DC/5G
1G SFP	850nm	550m	LC	CP -8524 -S5xD	DC/5G
	1310nm	2/20/40km		CP -1324 -02xD/GP -3124 -L2xD/GP -3124 -L4xD	
	1550nm	40/80/120km		CP -5524 -L4xD/GP -5524 -L8xD/GP -5524 -12CD	
1G SFP BiDi	1310/1550nm	2/20/40/60km	Simplex LC/SC	CPB -xx24x -02xD/GPB -xx24x -L2xD/GPB -xx24 x-L4xD/GPB xx24L -L6CD	DC/5G
	1310/1490nm	20/40km		CPB -xx24x -L2xD/GPB -xx24x -L4xD/	
	1490/1550nm	80/120km		CPB -xx24L -L8CD/GPB -xx24L -12CD	
1G CSFP	1310/1490nm	20/40km	LC	CCB -xx03 -L2xD/GCB -xx03 -L4xD	DC/5G
	1310/1550nm	20/40km		CCB -xx03 -L2xD/GCB -xx03 -L4xD	
1G SFP CWDM	1271~1611nm (20nm)	40/80km	LC	CPC -xx24-04xD/GPC -xx 24-08xD	DC/5G
	1271~1431nm (20nm)	100km		CPC -xx 24-10CD	
	1451~1611nm (20nm)	120km		CPC -xx 24-12CD	
1G SFP DWDM	1528.77~1563.05nm (100GHz)	80/120km	LC	CPD -xx 24-08CD/GPD -xx 24-12CD	DC/5G

Copper Transceiver



Product	Reach	Network	Port	P/N	Use
10GBASE -T SFP+	30m	CAT6a	RJ45	CE-XB-P7RC	DC/5G
1000BASE -TSFP	100m	CAT5/5e	RJ45	CE-GB-P3Rx-E	DC/5G
	100m	CAT5/5e	RJ45	CE-GB-P3Rx-C5	
10/100/1000BASE -T SFP	100m	CAT5/5e	RJ45	CE-GB-P1Rx-E	DC/5G
100BASE -TSFP	100m	CAT5/5e	RJ45	CE-FB-P4Rx	DC/5G
10/100BASE -T SFP	100m	CAT5/5e	RJ45	CE-FB-P2Rx	DC/5G

Coherent Optical Module



Product	Wave length	Reach	Power	P/N
100G CFP DCO	DWDM C-band 50GHz Tunable	120km/600km/2000km	21~28W	CCF-S101-xx-xTCA
100G CFP2 DCO	DWDM C-band 50GHz Tunable	800km/2000km	22W	CF2-S101-xx-xTCA
200G CFP2 DCO	DWDM C-band 50GHz Tunable	800km/2000km	22W	CF2-S101-xx-xTCA
400G CFP2 DCO	DWDM C-band 75Hz Tunable	400km	22W	CF2-S401-MR-1TCB
400G QSFP-DD ZR	DWDM C-band 75GHz /100GHz	120km	16.5W	CQ4-S401-ZR
400G QSFP-DD ZR+	DWDM C-band 75GHz /100GHz	400km	22W	CQ4-S401-ZR

CEN CPO (Co - Packaged Optics)

02

CPO



Product	Modulator type	Number of channels	Reach	Wavelength	Max. power consumption
1600G CPO	Silicon photonic modulator	16x100G PAM4	500m	1310nm	<16W

Product	Light Source Type	Number of channels	Wavelength	Max Tx power per lane
EL-OSFP External Light Source Module	CW-LD	16X	1310nm	20dBm

Immersion Liquid Cooling DAC



Product	Speed	Reach	P/N
10G SFP+ DAC	10.52Gbps	7m	CLS-PC100-XXC
25G SFP28 DAC	25.78125Gbps	5m	CLS-PC250-XXC
40G QSFP+ DAC	41.25Gbps	5m	CLQ-PC400-XX
100G QSFP28 DAC	103.12Gbps	5m	CLQ-PC101-XX
200G QSFP56 DAC	212.5Gbps	3m	CLQ-PC201-XX
200G QSFP-DD DAC	206.25Gbps	3m	CLD-PC201-XX
400G QSFP-DD DAC	425Gbps	3m	CLD-PC401-XX
400G OSFP-RHS DAC	425Gbps	3m	CLO-PC401-XX
400G QSFP112 DAC	425Gbps	3m	CLQ-PC401-XX
800G QSFP-DD DAC	850Gbps	2m	CLD-PC801-XX
800G OSFP DAC	850Gbps	2m	CLO-PC801-XX

SDI Optical Transmission Solution

06

SDI Optical Transceiver



Product	Wave length	Reach	Power	P/N
48G SDI QSFP+ PSM4	1310nm	10km/20km	3.5W	CHM-3148G-LXCDM
12G-SDI SFP+	1310nm	20km	1.5W	CHP-3112G-L2CDM
12G-SDI SFP+ BiDi	1270nm/1330nm	20km	1W	CHB-XX12GL-L2CD
12G-SDI SFP+ CWDM	1271nm~1451nm	10km	1.5W	CHPC-XX12G-LXCDM
12G SDI DWDM O-BAND	16CH O-BAND 100GHz	30km	TBD	TBD
12G-SDI SFP+ Tx	1310nm	20km	0.6W	CHT-3112G-L2CDM
12G-SDI SFP+ CWDM Tx	1271nm~1451nm	10km	0.6W	CHTC-XX12G-LXCDM
12G-SDI SFP+ 2Tx	1310nm	20km	1.2W	CTT-3112G-L2CD
12G-SDI SFP+ CWDM 2Tx	1271nm~1451nm	10km	1.2W	CTTC-XXXX12G-L1CD
12G-SDI SFP+ Rx	1310nm	20km	0.5W	CHR-12G-L2CD
12G-SDI SFP+ 2Rx	1310nm	20km	1W	CRR-12G-L2CD
3G-SDI SFP	1310nm/1550nm	2~80km	1.4W	CHP-313G-02x(D)
3G-SDI CWDM SFP	1270nm~1610nm 1270nm~1570nm	20~80km	1.4W	CHPC-XX3G-LXCD
3G-SDI SFP Tx	1310nm/1550nm	2~40km	1.2/1.4W	CHT-313G-02xD
3G-SDI SFP CWDM Tx	1270nm~1570nm	40km	1.2W	CHTC-XXXX3G-L4CD
3G-SDI SFP 2Tx	1310nm/1550nm	2~40km	1.7W	CTT-31313G-02xD
3G-SDI SFP CWDM 2Tx	1270nm~1570nm	40km	1.7W	CTTC-XXXX3G-L4CD
3G-SDI SFP Rx	1310nm	2~40km	0.5W	CHR-3G-xxx
3G-SDI SFP 2Rx	1310nm	2~40km	0.5W	CRR-3G-xxxD

3G/12G/48G SDI Optical Extenders



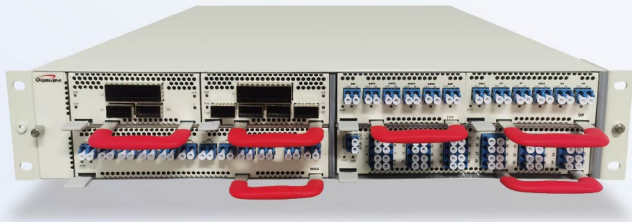
Product	Application	Max. Distance	Optical Interface	Electrical Interface	Part Number
16x3G-SDI over Fiber, 2x GE, WebManaged(Tx)	16x3G-SDI	0 ~ 20 km/20 ~ 40 km 20 ~ 60 km	FC/LC	16x BNC	C-SDI-E-16*3G-TX-IP-NMS
16x3G-SDI over Fiber, 2x GE, Web Managed(Rx)	16x3G-SDI	0 ~ 20 km/20 ~ 40 km 20 ~ 60 km	FC/LC	16x BNC	C-SDI-E-16*3G-RX-IP-NMS
4 x12G Mini SDI Optical Fiber Extender (TRx w/ CDR)	4x 12G-SDI	1270nm/1330nm	1x QSFP+ (TRx)	4x BNC Input 4x BNC Output	C-SDI-E-4*12G-TRA
4x12G SDI CWDM Optical Extender (Tx/Rx)	4x 12G-SDI	20km	Simplex FC	4x BNC Input/Output	C-G-SDI-E-4*12G-T C-SDI-E-4*12G-R
2x12G SDI Optical Extender (TRx)	2x 12G-SDI	20km	2x SFP+ (TRx)	2x BNC Input 2x BNC Output	C-G-SDI-E-4*12G-T C-SDI-E-4*12G-R
1x12G SDI Optical Extender (TRx)	1x 12G-SDI	20km	1x SFP+ (TRx)	1x BNC Input 1x BNC Output	C-SDI-E-1*12G-TR
1x12G SDI Optical Extender (Tx)	1x 12G-SDI	20km	1x SFP+ (TRx)	1x BNC Output	C-SDI-E-1*12G-Tx
1x12G SDI Optical Extender (Rx)	1x 12G-SDI	20km	1x SFP+ (TRx)	1x BNC Output	C-SDI-E-1*12G-Rx
4x3G SDI Optical Extender (Tx)	4x 3G-SDI	40km	2x SFP (2Tx)	4x BNC Output	C-SDI-E-4*3G-Tx
4x3G SDI Optical Extender (Rx)	4x 3G-SDI	40km	2x SFP (2Tx)	4x BNC Output	C-SDI-E-4*3G-Rx

DCI BOX



2U 12.8T DCI BOX

The CEN LINK 2U 12.8T DCI BOX is an open coherent DWDM optical transport platform for data center interconnect (DCI) and metro optical transmission applications.



Parameters	Specifications
Client-side Rate	400GE/100GE/OTU4 or 10GE/OC-192/STM-64/8GFC/10GFC/16GFC
Line-side Rate	100G/200G/400G
RODAM Dimension	9
Power Consumption	≤300W
Dimensions(W×H×D)	440mm×88mm×420mm
Power Supply	AC(90V to 264V, 50/60HZ),DC(-36V to +60V)

1U 800G DCI BOX

The CEN LINK 1U 800G DCI BOX supports ultra-large capacity service access, ultra-long-distance service transmission, and simple and convenient operation and maintenance management. It can operate reliably and save energy and reduce emissions, which can effectively meet the data center interconnection (DCI) needs of Internet companies, operators, and cloud service providers etc.



Product Features		Description
Environmental requirements	Operating temperature	-10°C~60°C
	Storage temperature	-20°C~75°C
	Relative humidity	5%~95% No condensation
Size(W×H×D)	1U	482.6×44.5×300mm
Power supply	AC	85~264V, 50~60Hz
	DC	36~72V
Power Consumption	1U	< 150W

1U 6.4T DCI BOX

The 1U 6.4T DCI BOX is an industry-leading innovative data center interconnection product. It provides ultra large capacity business access, ultra long distance business transmission, simple and convenient operation and maintenance management (Web/SNMP), and can also operate reliably, save energy, and reduce emissions. It can effectively meet the needs of data center interconnection for users such as internet companies, operators, and cloud service providers. This product supports 4 slots, each slot supports transparent transmission of 100G/200G/400G OTU.



1U 1.6T DCI 4×1.6T

Product Features		Description
Maximum capacity of a single system		4x1.6T
Wavelength (frequency) range		DWDM: 1529.16nm~1567.14nm(191.3THz-196.05THz)
Single wavelength capacity		100G/200G/400G and three speed smooth upgrade/downgrade; Coherent detection and reception, QPSK/16QAM/16QAMPS modulation technology;
Physical network topology		Chain, star, ring
Environmental requirements	Operating temperature	-10°C~70°C
	Storage temperature	-40°C~80°C
	Relative humidity	5%~95% No condensation
Size(W×H×D)		440mm×44mm×535mm
Heat dissipation ventilation design		Forward wind, rear air, FRU fan
Structure		Integrated chassis, 19 inch rack
Power Supply Requirements (Standard value)		AC voltage range: 90V~264V 50/60Hz DC power supply voltage range: -36V~60V
Safety and EMC		Comply with FCC、UL、CE、TUV、CSA standards
Power consumption		<350W

Non-Coherent DWDM Equipment



	1G/10G OEO	25G OEO	100G OEO	100G Muxponder
Product				
Rate Access	155Mbps~11.3Gbps	25.5~28.1Gbps	103.1~112Gbps	25.5~28.1Gbps
Service Access 3R function	Ethernet, P/SDH, ATM, etc Support	Ethernet, FC, etc Support	Ethernet, FC, etc Support	Ethernet, FC, etc Support
Single card supports services	Single card supports 4-way bidirectional and 8-way service processing	Single card supports 4-way bidirectional and 4-way unidirectional service processing	A single card supports two two-way service processing channels	Single card supports 4-way unidirectional service processing
Advantage	Plug and pull design, high integration Save cabinet space	Plug and pull design, high integration Save cabinet space	Supports SNMP/ client remote management	Plug and pull design, high integration Save cabinet space
	Easy to expand	Easy to expand	DM information monitoring	Easy to expand
Line-side optical transceiver	10G SFP+ DWDM	25G SFP28 DWDM	100G QSFP28 PSM DWDM4	25G SFP28 DWDM

Colox X and Color ZR Optical transceivers



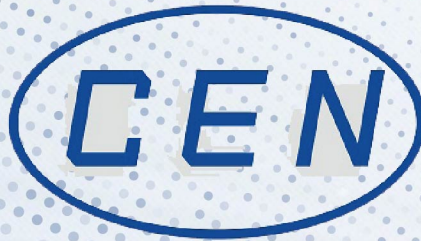
Product	LD	Reach	Optical Interface	Max. Power	P/N	Use
100G QSFP28 DWDM1	O-BAND CW+MZ	30km	Dual LC	4W	CQS-SI101-DE51C	DC/5G
100G QSFP28 PSM DWDM4	O-band 150GHz DML C-band 100GHz EML	40km/80km	MPO	5W	CQS-Dxx101-124C CQS-Oxx101-ER4C	DC/5G
400G QSFP-DD PSM DWDM4	O-band CW+MZ	30km	MPO	12W	CQD-Cxx401-DZR4	DC
800G OSFP PSM DWDM4	O-band CW+MZ	30km	MPO	TBD	TBD	DC

CEN LINK

FIBER OPTIC CONNECTIVITY

OPTICAL TRANSCEIVER SUPPLIER

NEW BROCHURE



欣訊科技股份有限公司 CEN LINK CO., LTD

Head office Add:10F., No. 173, Sec. 2, Datong Rd., Xizhi
Dist., New Taipei City, Taiwan, R.O.C



TEL : 886-2-8692-6267

FAX : 886-2-8692-6265

E-Mail : cen@cenlink.com.tw

