



2.0mm FEMALE HEADER SMD TYPE DUAL ROW

ORDER INFORMATION

$\frac{X}{a}$ P90-02 $\frac{X}{b}$ 02- $\frac{XX}{c}$ $\frac{T}{d}$ 1

α =Y-RoHS

Z-RoHS(for High Temperature)

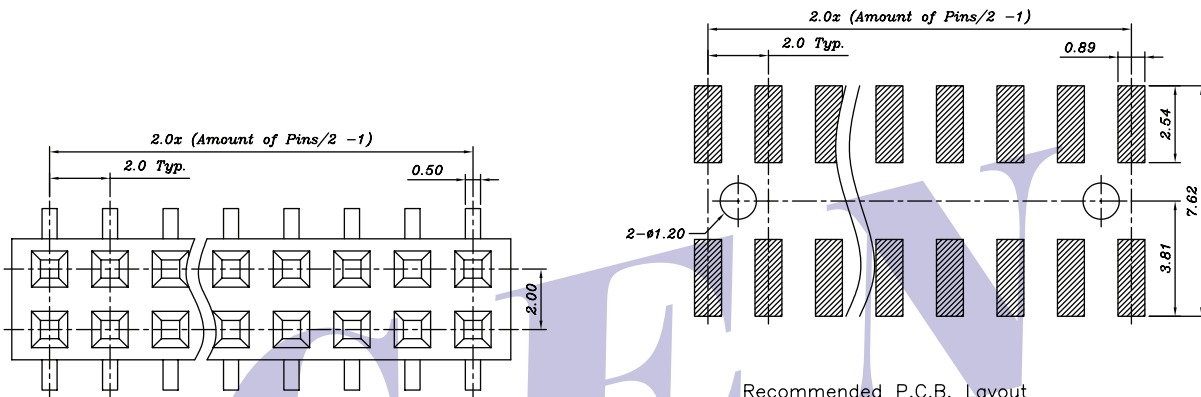
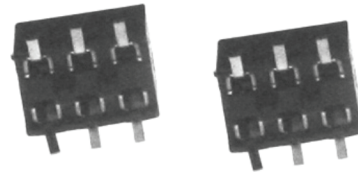
b =5-Without Post

B-With Post

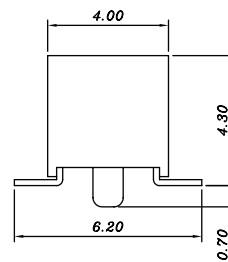
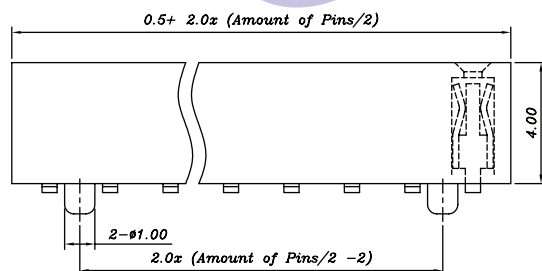
c =06~60-6~60Pins

d =T-Tube

e =1-G/F Overall



Recommended P.C.B. Layout
Layout Tolerance = ± 0.05 mm



SPECIFICATION

Current Rating : 1A

Contact Resistance : 20m Ohms Max.

Dielectric Withstanding : AC 500V

Operating Temperature : $-40^{\circ}\text{C} \sim 105^{\circ}\text{C}$

Note: Due to technical progress, all design, specification and components are subject to change without notice