



# 1.27x2.54mm FEMALE HEADER SMD TYPE SINGLE ROW BASE 5.8mm

## ORDER INFORMATION

$\frac{X}{a}$  P90-0720  $\frac{X}{b}$  -  $\frac{XX}{c}$   $\frac{T}{d}$   $\frac{1}{e}$

a=Y-RoHS

Z-RoHS(for High Temperature)

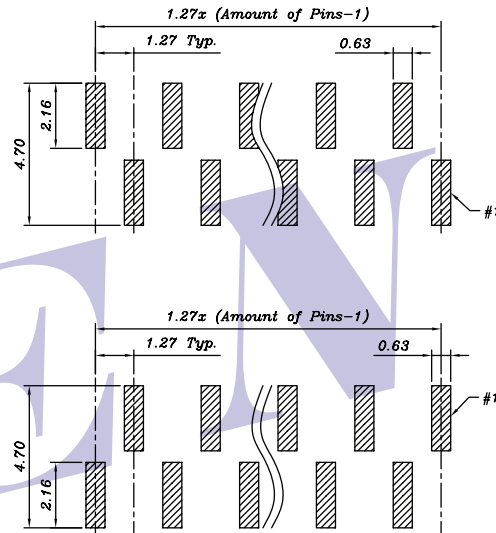
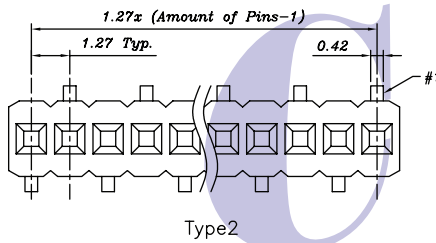
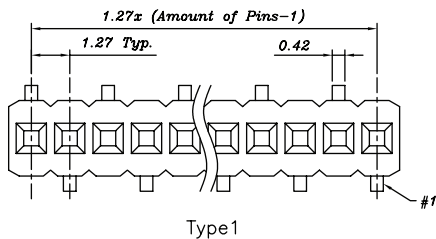
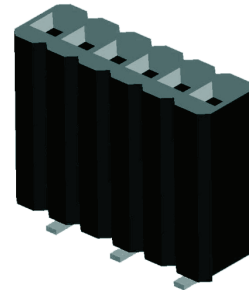
b=Type Option

Type1,Type2

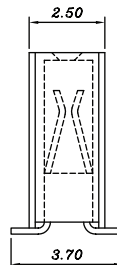
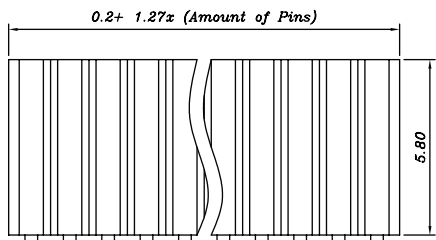
c=Amount of Pins:03~40-3~40Pins

d=T-Tube

e=1-G/F Overall



Recommended P.C.B. Layout  
Layout Tolerance =  $\pm 0.05$  mm



## SPECIFICATION

Current Rating : 1A

Contact Resistance : 20m Ohms Max.

Dielectric Withstanding : AC 500V

Operating Temperature :  $-40^{\circ}\text{C} \sim 105^{\circ}\text{C}$

Note: Due to technical progress, all design, specification and components are subject to change without notice