



1.27mm PIN HEADER S/T TYPE SINGLE ROW

ORDER INFORMATION

$\frac{X}{\alpha}$ P91-0310 $\frac{X}{b}$ - $\frac{XX}{c}$ $\frac{B}{d}$ $\frac{1}{e}$

α =Y-RoHS

Z-RoHS(for High Temperature)

b =Type Option

Housing Dim.H-1.0mm,1.5mm,2.0mm

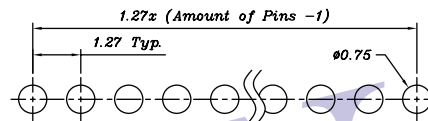
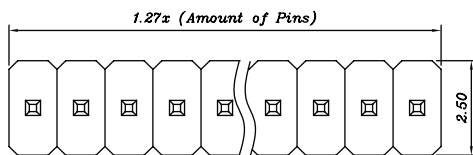
Pin Length(Dim.A/Dim.B):

Custom Length Available

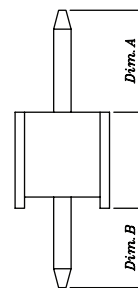
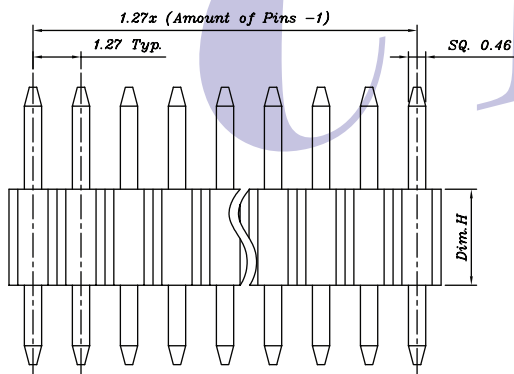
c =Amount of Pins:02~50-2~50 Pins

d =B-Bag

e =1-G/F Overall



Recommended P.C.B. Layout
Layout Tolerance = ± 0.05 mm



SPECIFICATION

Current Rating : 1A

Dielectric Withstanding : AC 500V

Operating Temperature : $-40^{\circ}\text{C} \sim 105^{\circ}\text{C}$

Note: Due to technical progress, all design, specification and components are subject to change without notice