



1.27mm FEMALE HEADER SMD TYPE DUAL ROW TOP ENTRY

ORDER INFORMATION

$\frac{X}{a}$ P90-03 $\frac{X}{b}$ 3 $\frac{X}{c}$ - $\frac{XX}{d}$ $\frac{T}{e}$ $\frac{1}{f}$

a =Y-RoHS

Z-RoHS(for High Temperature)

b =5-with Post

B-Without Post

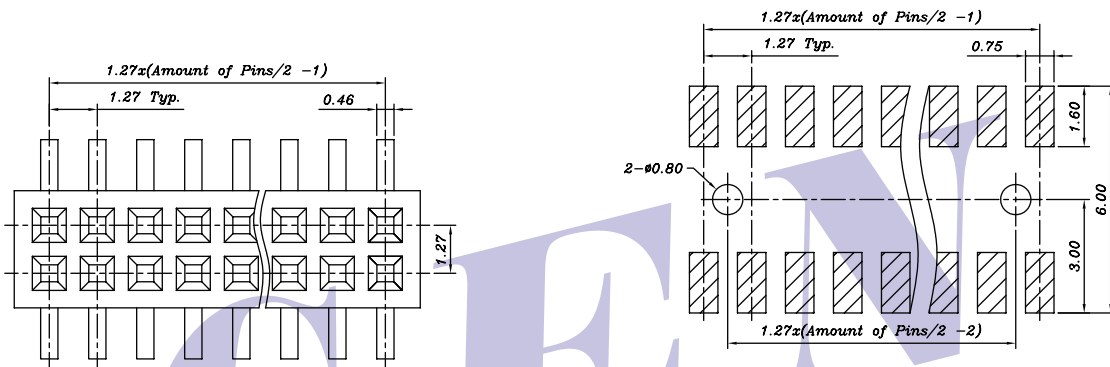
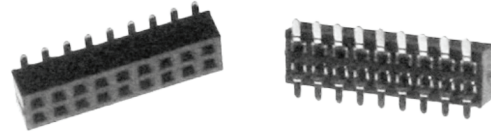
c =Type Option

Housing Dim.W-3.1mm,3.4mm

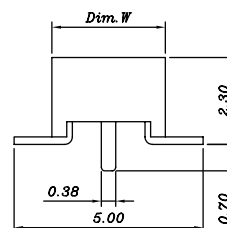
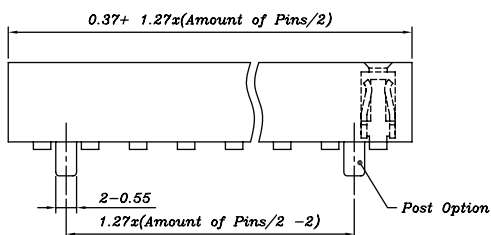
d =Amount of Pins:06~A0-6~100Pins

e =T-Tube

f =1-G/F Overall



Recommended P.C.B. Layout
 Layout Tolerance = ± 0.05 mm



SPECIFICATION

Current Rating : 1A

Contact Resistance : 20m Ohms Max.

Dielectric Withstanding : AC 500V

Operating Temperature : $-40^{\circ}\text{C} \sim 105^{\circ}\text{C}$

Note: Due to technical progress, all design, specification and components are subject to change without notice