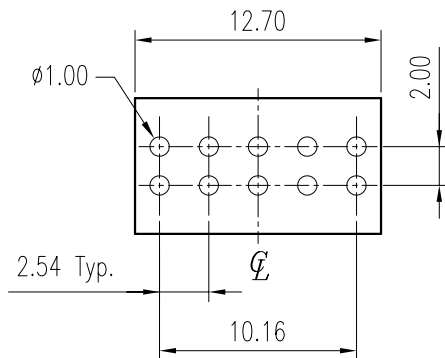
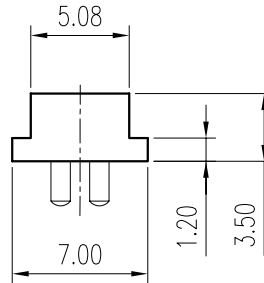
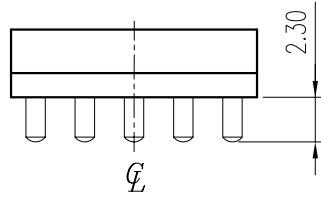
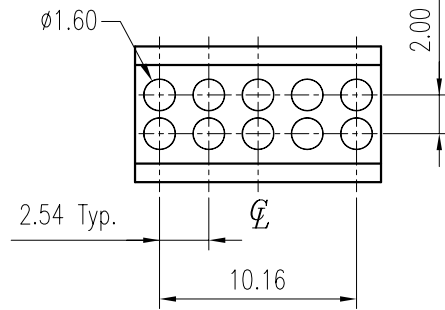


REV.	DESCRIPTION	ECN NO.	DATE	DRAWER
A	New Release		11/16/2004	Jeff
B	Added Plating Type \triangle_B	EC0501016	01/28/2005	Jeff
C	Modified Part No. \triangle_C x2	EC0603019	03/09/2006	Jeff



Notes:

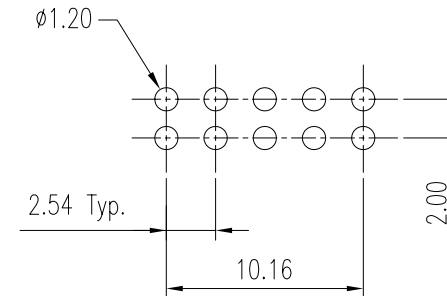
- Material :
Housing : Thermoplastic UL 94V-0, Black.
Terminal : Copper Alloy
- Finish :
Terminal : Selected Gold Over 40u" Min. Ni Overall
- Order Information :

\triangle_C T PN1-01250-00T X

T : RoHS (for High Temperature)

Plating

- 1 : G/F Over 40u" Min. Ni
- 6 : 20u" Min. Gold Over 40u" Min. Ni Overall.
- 8 : 30u" Min. Gold Over 40u" Min. Ni Overall.



Recommended P.C.B. Layout
Layout Tolerance = ± 0.05 mm

DIMENSION IN mm [inch]			
Tolerance unless otherwise specified			
X.	\pm --	X.*	$\pm 10'$
X.X	± 0.38	X.X*	$\pm 5'$
X.XX	± 0.25	X.XX*	$\pm 2'$
X.XXX	± 0.13	X.XXX*	\pm

CEN 欣訊科技股份有限公司
CEN LINK CO., LTD.

CUSTOMER DRAWING

Approver:

Checker:

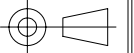
Drawer: **Jeff**

03/09/2006

Title 2.54mm Pitch Pin Header
Dual Row Dip Type

Dwg No. TPN1-01250-00TX \triangle_C

File No. PO4009



Scale: 2.5 : 1

Size: A 4

Rev : C

Sheet: 1 / 1