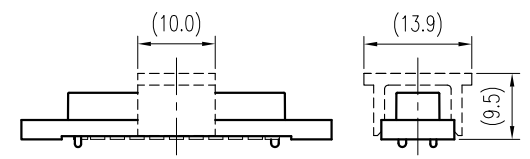
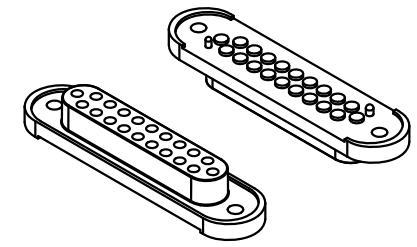
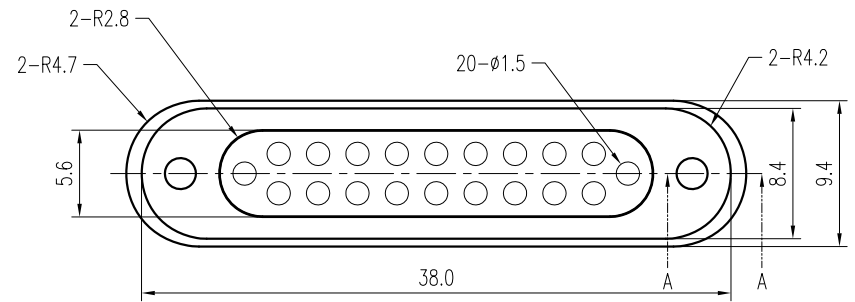


REV.	DESCRIPTION	ECN NO.	DATE	DRAWER
A	New Release		08/19/2008	Tom



With Cap

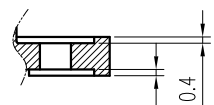
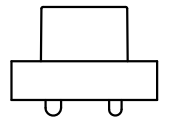
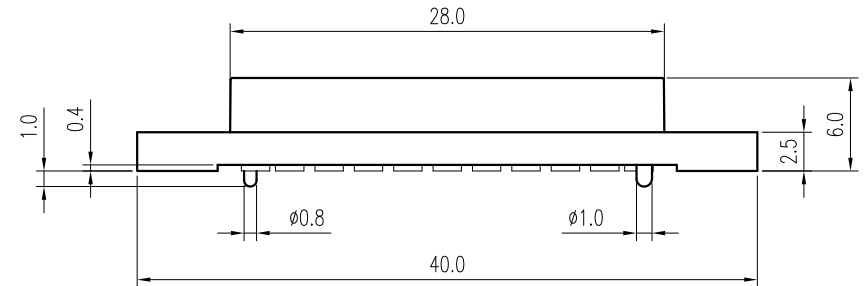
Notes:

- Material :
Housing : Thermoplastic UL 94V-0, (LCP Black)
Terminal : Copper Alloy
Boardlock : Copper Alloy
- Finish :
Terminal : 20u" Gold on Contact Area, 50u" Min. Ni Under-plated Overall
- Order Information :

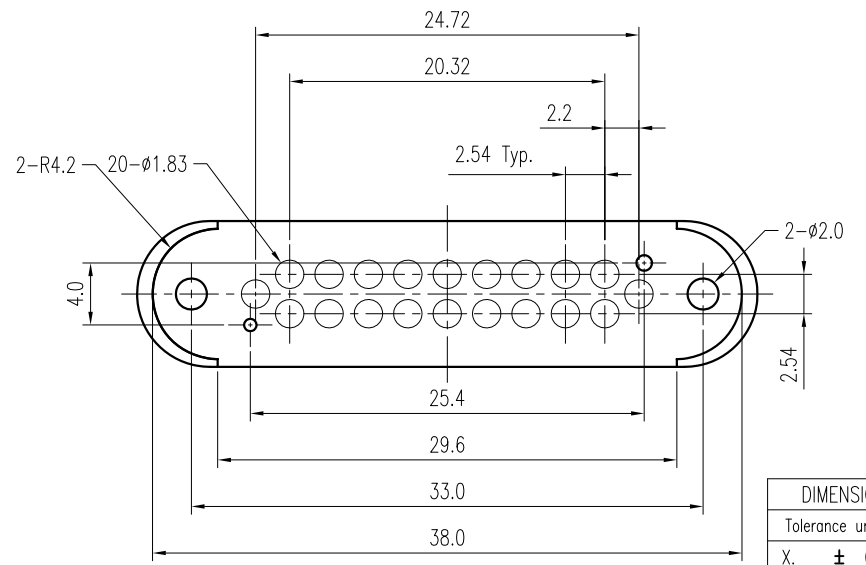
TPE0-02820-00 X 6

Packing

- T : Tube
- 1 : Tube With Cap
- 2 : Tape&Reel With Cap



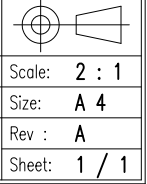
Section A-A



DIMENSION IN mm [inch]			
Tolerance unless otherwise specified			
X.	± 0.38	X.*	± 10'
X.X	± 0.20	X.X*	± 5'
X.XX	± 0.13	X.XX*	± 2'
X.XXX	±	X.XXX*	±

CEN 欣訊科技股份有限公司
CEN LINK CO., LTD.
CUSTOMER DRAWING

Title 20 Pin Machine Pin Conn.
Dwg No. TPE0-02820-00X6
File No. PO8015



Approver: _____ Checker: _____ Drawer: Tom
08/19/2008

Scale: 2 : 1
Size: A 4
Rev : A
Sheet: 1 / 1